

PROJECT

Proposed Part 10 Residential Development,
Dundrum Central Development, Dundrum
Road, Dublin 14

APPLICANT DETAILS

Dun Laoghaire-Rathdown County Council



AGENT DETAILS

Land Development Agency

CONSULTANT

AECOM Ireland Limited
Regus House, Harcourt Centre,
Block 4 Harcourt Rd, Saint Kevin's,
Dublin, D02 HW77
01 676 3671 tel

KEY PLAN

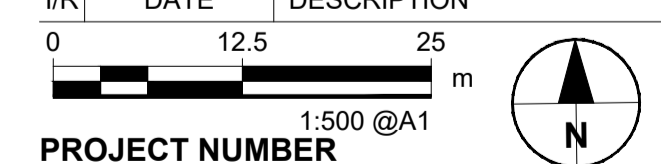


LEGEND

- Site Boundary
- Existing Trees Retained
- Proposed Parkland Trees
- Proposed Street Trees
- Proposed Feature Trees
- Proposed Fruit Trees
- Amenity Lawn
- Mown Grass Strip
- Meadow Grass
- Native Groundcover Planting Mix
- Ornamental Shrubs and Ground Covers
- Rainingarden / Bioretention to Civil Engineers Details
- Native Woodland Mix
- Grasscrete (For Ground Floor Plant Access and Fire Tender Access)
- Hedge Planting (Privacy hedge planting to ground floor units)
- Parkland Surface Resin Bound Gravel
- Footpath
- Exposed Aggregate Concrete
- Feature Plaza Paving
- Mixed Unit Granite Setts
- Plaza Paving
- Small Unit Precast Concrete
- Privacy Ground Floor Patio & Courtyard Paving
- Small Unit Precast Concrete
- Parking Paving
- Small Unit Permeable Concrete
- Cycle Way
- HRA with Coloured Chipping
- Shared Surface & Raised Table
- HRA with Coloured Chipping
- Play Area
- Integrated Constructed Wetland to Civil Engineers Details
- Green Roofs & PV Panels to Architects / Engineers Details
- Target Landscape Levels
- Building FFL's Levels to Architects Details (FFL's shown are to Finished Ground Floor Levels of Apartment/Housing Blocks)
- Road Levels to Civil Engineers Details

ISSUE/REVISION

NO	DATE	DESCRIPTION
P7	19.09.24	Final Planning Issue/LDA comments
P6	04.09.24	Final Planning Issue
P5	02.08.24	Draft Issue for LDA Comment
P4	11.07.24	Draft for DLRC Comment
P3	03.07.24	Draft For Comment
P2	20.06.24	Draft For Comment
P1	07.06.24	Draft For Comment
I/R	DATE	DESCRIPTION



PROJECT NUMBER

60588099

SHEET TITLE

LANDSCAPE LAYOUT
DETAIL AREA SHEET 2/4

SHEET NUMBER

DSRM-ACM-00-ST-DR-L-1002

This drawing has been prepared for the use of AECOM's client. It may not be used, modified, reproduced or relied upon by third parties, except as agreed by AECOM or as required by law. AECOM accepts no responsibility, and denies any liability whatsoever, to any party that uses or relies on this drawing without AECOM's express written consent. Do not scale this document. All measurements must be obtained from the scaled dimensions.

